

Operating Instructions

The new Advanced Key Fob Remote will react to match the angle or attitude that you hold the fob.

Power-Pole DOWN

While the button is pressed:

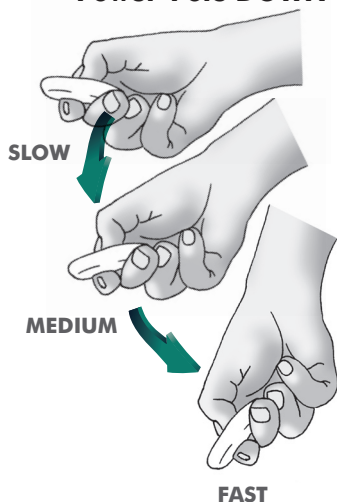
- Angle the fob slightly down = DOWN SLOWLY
- Continue down angle = DOWN QUICKER
- Steep down angle = DOWN FAST

Power-Pole UP

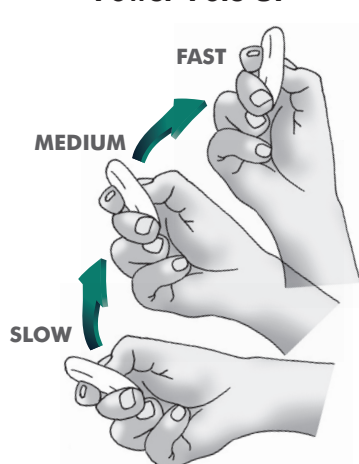
While the button is pressed:

- Angle the fob slightly up = UP SLOWLY
- Continue up angle = UP QUICKER
- Steep up angle = UP FAST

Power-Pole DOWN



Power-Pole UP



DUAL Power-Pole operation

The Advanced Key Fob Remote provides total flexibility and more control when operating DUAL Power-Pole shallow water anchors.

While the button is pressed:

1. With the fob held level, BOTH Power-Poles will operate together.
2. Now use the angle motions to operate the anchors.

BOTH ANCHORS

HOLD THE FOB LEVEL

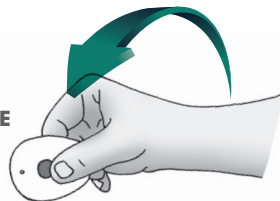


To operate the LEFT Power-Pole individually:

1. Rotate the fob to the left, the fob will operate the left Power-Pole independently.
2. Now, while pressing the button use the angle motions to operate the anchor.

LEFT OR RIGHT ANCHOR

ROTATE LEFT OR RIGHT



To operate the RIGHT Power-Pole individually:

1. Rotate the fob to the right, the fob will operate the right Power-Pole independently.
2. Now, while pressing the button use the angle motions to operate the anchor.

PLACE
POST CARD
POSTAGE HERE
Post office will not
deliver without
proper postage.



JL Marine
SYSTEMS, INC.

9208 Palm River Road
Suite 303
Tampa, FL 33619

Two (2) year warranty

Conditions of warranty

An Advanced Key Fob Remote Control manufactured by JL Marine Systems Inc., is warranted against defects in material and workmanship to the original owner according to the following stipulations.

1. Advanced Wireless Key Fob Remote Control warranty is activated on the date of purchase by JL Marine Systems, Inc. You may also register your Key Fob Remote Control on our web site or send in the registration card. Please retain your sales receipt as proof of purchase.
2. Install Genuine Power-Pole Merchandise ONLY. This warranty is void if any non authorized parts are used or installed.
3. This warranty is void if the Power-Pole® Advanced Wireless Key Fob Remote Control is used commercially structurally altered or subject to stress beyond the physical limits of the manufactured material. This Warranty is void if the Power-Pole® Key Fob Remote Control is exposed to excessive water or submersion.
 1. Parts which prove defective within (90) days from the date of purchase, JL Marine Systems, Inc. will pay for the replacement product shipping and handling fees to and from the JL Marine Systems, Inc. manufacturing plant or some other place which JL Marine Systems, Inc. might designate. Warranty shipping procedures only apply in the continental USA.
 2. Parts which prove defective after (90) days but before (24) months from the date of purchase will also be repaired or replaced free of charge, but there may be a shipping charge to JL Marine Systems, Inc. manufacturing plant or some other place which JL Marine Systems, Inc. might designate. Warranty shipping procedures only apply in the continental USA.

THE WARRANTY CONTAINED HEREIN IS THE EXCLUSIVE WARRANTY MADE BY JL Marine Systems, Inc. AND THERE ARE NO OTHER WARRANTIES, EXPRESSED OR IMPLIED, INCLUDING A WARRANTY OF FITNESS FOR A PARTICULAR PURPOSE OR OF MERCHANTABILITY MADE WITH RESPECT TO SUCH ANCHORS. JL Marine Systems, Inc. IS NOT LIABLE FOR ANY INJURY OR MISHAPS SUSTAINED IN THE USE OF THIS PRODUCT. THE USER OF THIS PRODUCT ACKNOWLEDGES ASSUMED RISKS AND WAIVES ANY AND ALL CLAIMS AGAINST JL Marine Systems, Inc. AND ANY OF IT'S AGENTS.

This warranty applies under conditions of normal use. The warranty does not cover:

- 1) defects caused by improper assembly or disassembly;
- 2) defects occurring after purchase due to product modification, intentional damage, accident, misuse, abuse, negligence or exposure to corrosive elements;
- 3) cosmetic damage and
- 4) labor or assembly costs.

Except as provided herein, JL Marine Systems, Inc. makes no express warranties, and any implied warranty, including without limitation any implied warranty of merchantability or fitness for a particular purpose, is limited in its duration to the duration of the written limited warranty set forth herein.

Except as provided herein, JL Marine Systems, Inc. shall have no liability or responsibility to the purchaser or any other person or entity with respect to any liability, loss or damage caused or alleged to be caused directly or indirectly by use of the product, including, but not limited to, any incidental or consequential damages. Some states do not allow limitation on how long an implied warranty lasts or the exclusion of limitation of incidental or consequential damages, so the above limitation and exclusion may not apply to you. This warranty gives you specific legal rights. You may also have other rights which vary from state to state.

IMPORTANT!

REGISTER YOUR NEW ADVANCED KEY FOB REMOTE CONTROL



To validate your warranty, register your new product online at www.power-pole.com
or fill out and submit this registration card.

Name _____

Address _____

City _____ State _____ Zip _____

Email address _____

Date of purchase _____ Age _____

Place of purchase _____

Type of boat _____ Length _____

I have read and understand the warranty of this product.

Signature _____

Advanced Key Fob Remote Control Featuring C-MONSTER™ Technology CONTROL SYSTEM

Congratulations on your purchase of an Advanced Key Fob Remote Control featuring state-of-the-art C-Monster Control System technology.

Programming Instructions

Programming

Step 1 Locate the "program" button on the top of the pump unit, depress and hold it for 3 seconds until the LED steadily illuminates green in color. The pump unit is now ready to be paired with the key fob remote. (See Figure 1)

NOTE: When dual Power-Pole shallow water anchors are installed, this procedure should be performed on BOTH pump units.

Step 2 Next, depress and release the button on the key fob remote 1 time. The green LED on the pump unit will initially turn off, and then it will flash steadily indicating that the pairing has been completed. (See Figure 2)

Step 3 The key fob remote is now paired to the pump unit. Test its functionality by following the operating instructions to ensure that the pairing procedure was completed successfully.

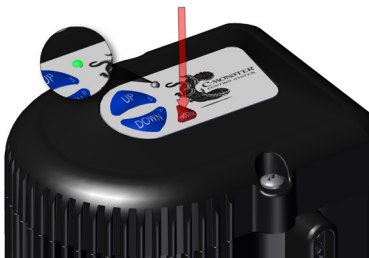


Figure 1

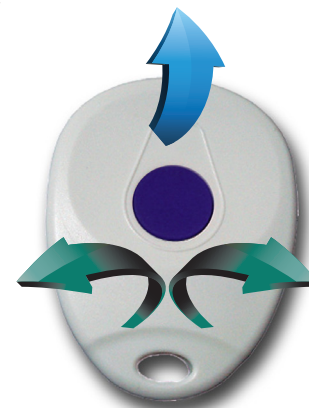


Figure 2

Tilt Orientation Control

The Advance Key Fob Remote Control features the C-Monster Control System, which gives this remote the unique ability to sense your hand and arm movements.

With a push of the button and the movement of your wrist or arm you can control the deployment of your Power-Pole shallow water anchor. Tilt up, the anchor goes up, tilt down, the anchor goes down. It even controls dual anchors, rotate left and control the port anchor, rotate right and control the starboard anchor, hold level and control both.



And depending on the amount of angle you also control the speed.

It's like nothing you've seen before.

See the **Operating Instructions** for complete details and control your Power-Pole shallow water anchor like never before.



Changing the Battery

Changing the Battery

Step 1 **Ensure the surrounding area is as dry and possible and avoid any moisture intrusion.**

Step 2 Use a small slotted screwdriver to remove the top cover of the remote control key fob. (See Figure 1)

Step 3 Remove the rubber switch membrane and the board from the bottom cover.

Step 4 Remove the battery from the holder on the front of the board and replace with any **CR2032 3V Lithium Coin Battery.**

Step 5 Place the board and rubber switch membrane back into the bottom cover and ensure that the rubber switch membrane is seated properly prior to installing the top cover.



Figure 1