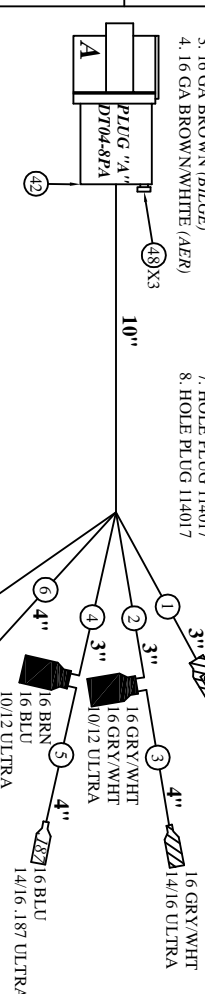
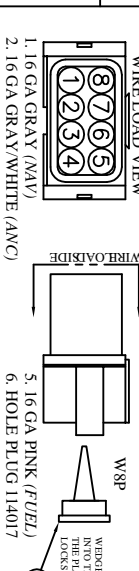


REV	DESCRIPTION	DATE	APPROVED
0	PRODUCTION RELEASE	03/10/08	

THIS DOCUMENT IS THE PROPERTY OF PHAZE II PRODUCTS, INC. ANY INFORMATION, SPECS OR DESIGNS MAY NOT BE COPIED OR USED IN ANY MANNER WITHOUT THE WRITTEN PERMISSION OF PHAZE II PRODUCTS. AND IF MUST BE RETURNED UPON REQUEST. ANY UNAUTHORIZED USE OF THIS DOCUMENT WILL BE PROSECUTED TO THE FULL EXTENT OF THE LAW.

**PLUG "A", 8 WAY, 14/16 GA. DEUTSCH RECEPT CONNECTOR DETAIL**  
**W/PINS DT04-08PA TO HARNESS 65-0804, PLUG "A"**

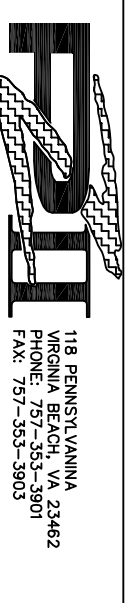
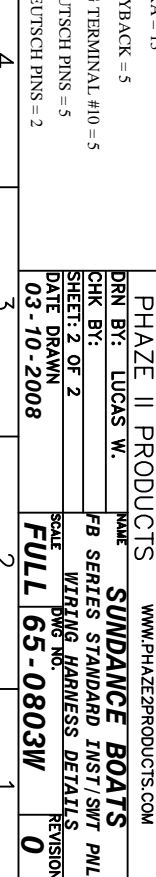
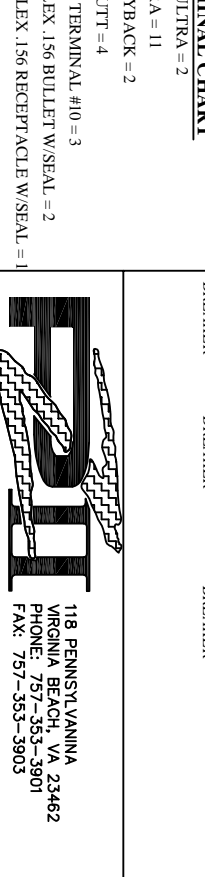
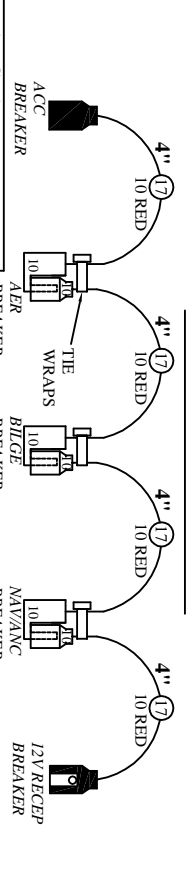
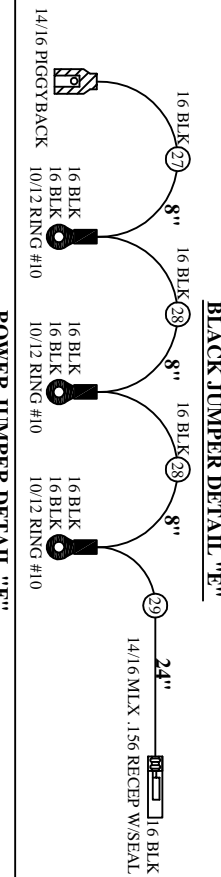
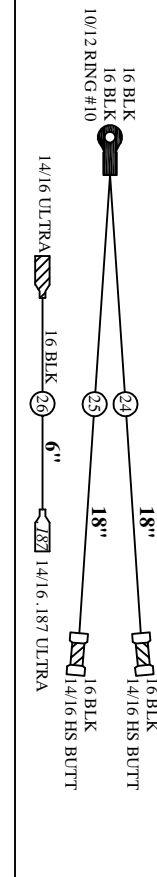
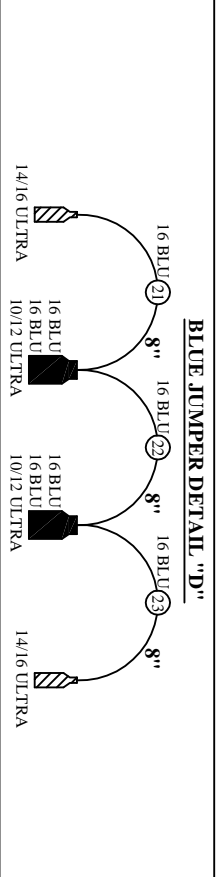
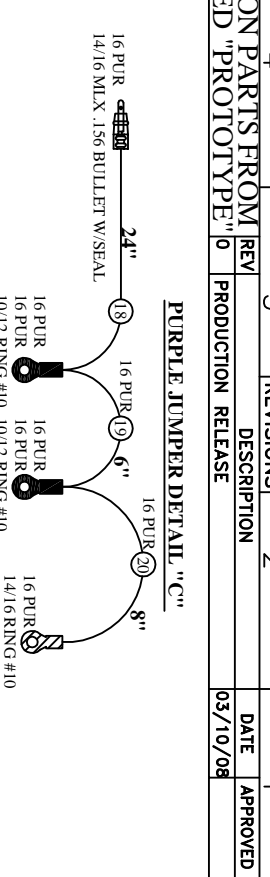
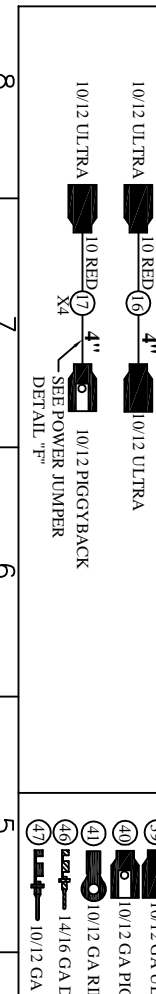
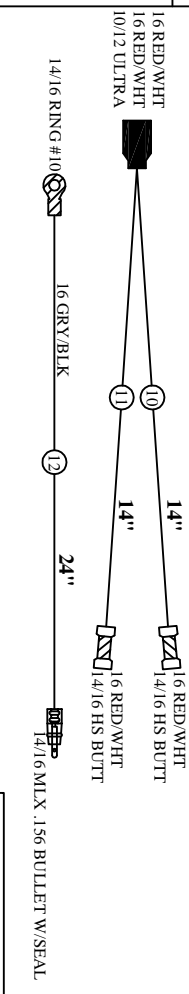
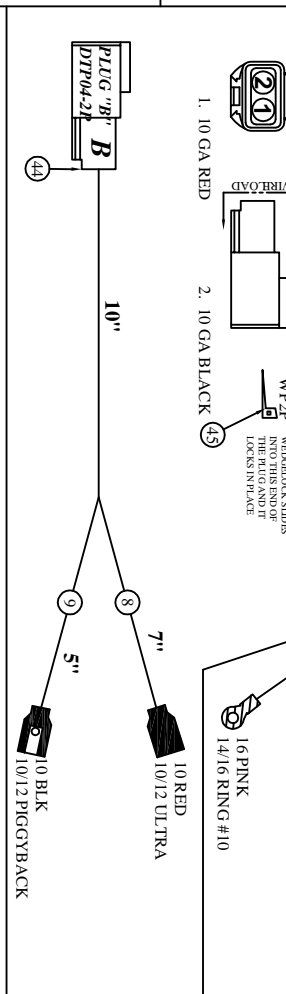


**PLUG "B", 2 WAY, 10/12 GA DEUTSCH RECEPT CONNECTOR DETAIL W/PINS DT04-2P TO HARNESS 65-0804, PLUG "B"**

WIRE LOAD VIEW

1. 10 GA RED  
 2. 10 GA BLACK

WSP  
 WIDENLOCK STRIPS INTO THIS SLOT AND LOCKS IN PLACE



**PHAZE II PRODUCTS**  
 WWW.PHAZE2PRODUCTS.COM

**SUNDANCE BOATS**  
 FB SERIES STANDARD INST/SHT PNL  
 WIRING HARNESS DETAILS

118 PENNSYLVANIA 23462  
 VIRGINIA BEACH, VA 23462  
 PHONE: 757-353-3901  
 FAX: 757-353-3903

DGN BY: LUCAS W.  
 CHK BY:  
 SHEET: 2 OF 2  
 DATE DRAWN: 03-10-2008  
 SCALE: FULL  
 REV: 0